

* Dishwash Detergent

Jangro *



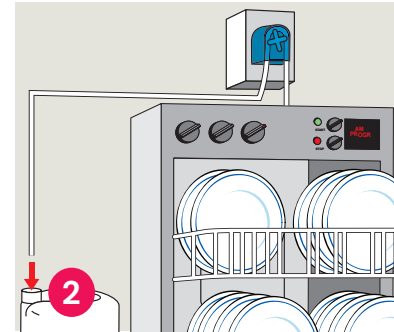
BB072-10



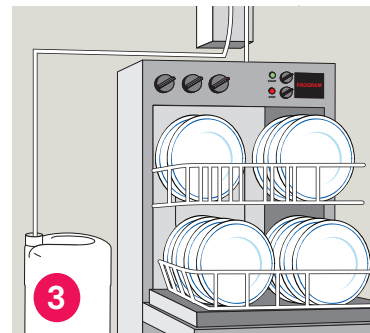
Automatic Dishwashing Machines:



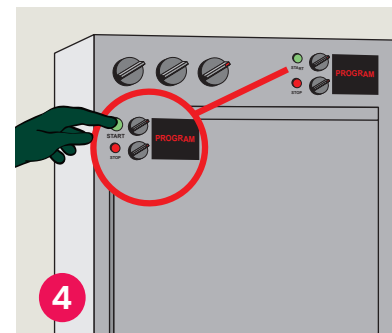
1 Place safety Sign & use the appropriate PPE as indicated in the Safety Data Sheet.



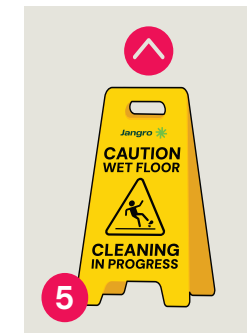
2 Connect the product to an electronic dosing system following the manufacturer's instructions.



3 Product should be diluted at the rate of 1-4ml of detergent per litre of water depending on hardness of water.



4 Select programme and press start.



5 Remove Safety Signs.

Areas for use



Health & Safety

Please refer to relevant COSHH Safety Data Sheet

www.jangro.net

Scan QR code for further product details



Do not use on aluminium, aluminium alloys or galvanised surfaces.
Not to be used for hand dishwashing.

Premium



Product Usage Guide