

# \* Dishwash Detergent

Jangro \*



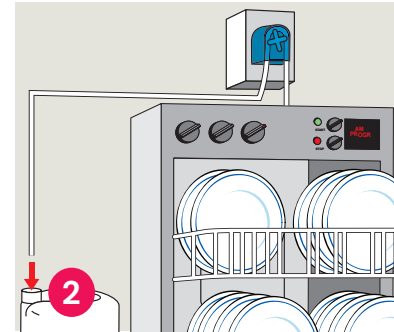
## BB077-5



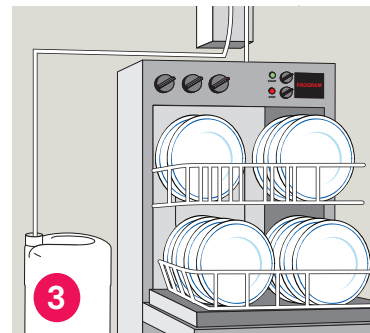
Automatic Dishwashing Machines:



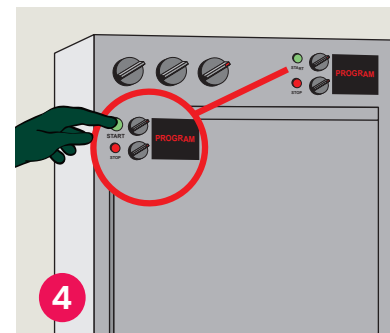
1 Place safety Sign & use the appropriate PPE as indicated in the Safety Data Sheet.



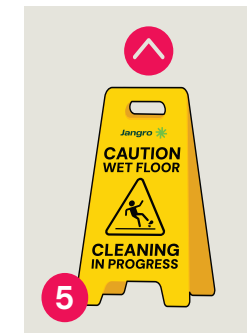
2 Connect the product to an electronic dosing system following the manufacturer's instructions.



3 Product should be diluted at the rate of 1-4ml of detergent per litre of water depending on hardness of water.



4 Select programme and press start.



5 Remove Safety Signs.

Areas for use



Health & Safety

Please refer to relevant COSHH Safety Data Sheet

[www.jangro.net](http://www.jangro.net)

Scan QR code for further product details



Do not use on aluminium, zinc, magnesium and their alloys. Not to be used for hand dishwashing.

Professional

Product Usage Guide