

# \* F3 Floor & Surface Cleaner

Jangro \*



Danger

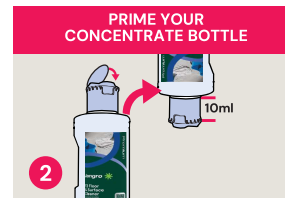
## BB460-1



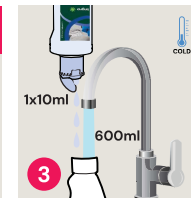
Spray Cleaning:



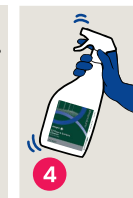
Place safety signs & use the appropriate PPE as indicated in the Safety Data Sheet.



Close cap, invert the bottle for a few seconds. Turn the bottle upright & dosing cap is primed with 10ml of solution.



Add 1x 10ml from dosing cap to 600ml cold water in trigger spray bottle.



Gently shake to mix.



Spray onto cloth & wipe surface.

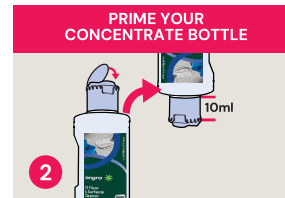


Remove Safety Signs.

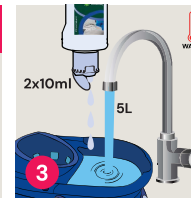
Damp Mopping:



Place safety signs & use the appropriate PPE as indicated in the Safety Data Sheet.



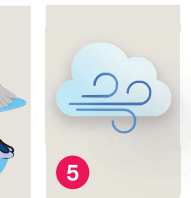
Close cap, invert the bottle for a few seconds. Turn the bottle upright & dosing cap is primed with 10ml of solution.



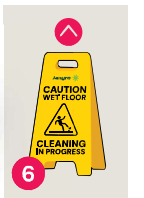
Add 2x 10ml from dosing cap to 5 litres of warm water.



Mop or wipe surface.



Allow to air dry.



Remove Safety Signs when floor is dry.

Scrubber Drier:



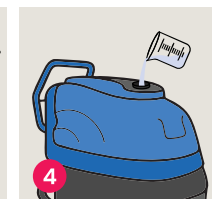
Place safety signs & use the appropriate PPE as indicated in the Safety Data Sheet.



Close cap, invert the bottle for a few seconds. Turn the bottle upright & dosing cap is primed with 10ml of solution.



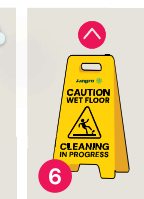
Add 2 x 10ml for every 10 litres of water.



Pour the solution into the cleaning machine.



Clean floor and leave to dry.



Remove Safety Signs.

Areas for use



**Health & Safety**  
Please refer to relevant COSHH Safety Data Sheet

[www.jangro.net](http://www.jangro.net)

Scan QR code for further product details



Causes skin irritation. Causes serious eye damage.

Product Usage Guide

Premium