

# \* K4 Kitchen Sanitiser

Jangro \*



## BB472-1



### Areas for use



**Health & Safety**  
Please refer to relevant COSHH Safety Data Sheet

[www.jangro.net](http://www.jangro.net)

Scan QR code for further product details

### General:



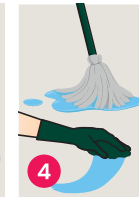
Place safety signs & use the appropriate PPE as indicated in the Safety Data Sheet.



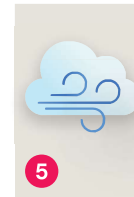
Close cap, invert the bottle for a few seconds. Turn the bottle upright & dosing cap is primed with 10ml of solution.



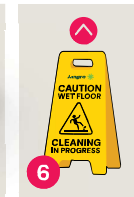
Add 2x 10ml from dosing cap to 5 litres of warm water.



Mop or wipe surface.



Allow to air dry.



Remove Safety Signs when floor is dry.

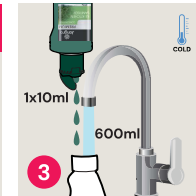
### Disinfecting Hard Surfaces To kill bacteria EN1276 & EN16615. 30 seconds contact time:



Place safety signs & use the appropriate PPE as indicated in the Safety Data Sheet.



Close cap, invert the bottle for a few seconds. Turn the bottle upright & dosing cap is primed with 10ml of solution.



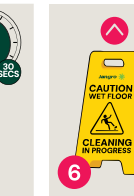
Add 1x 10ml from dosing cap to 600ml cold water in trigger spray bottle.



Gently shake to mix.



Spray surface, leave for 30 seconds contact time. Wipe with a single use cloth.



Remove Safety Signs.

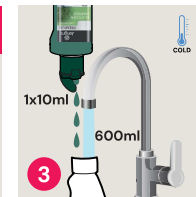
### Disinfecting Hard Surfaces To kill enveloped viruses e.g. Coronaviruses. EN14476, EN16777. 1 minute contact time:



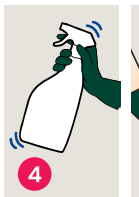
Place safety signs & use the appropriate PPE as indicated in the Safety Data Sheet.



Close cap, invert the bottle for a few seconds. Turn the bottle upright & dosing cap is primed with 10ml of solution.



Add 1x 10ml from dosing cap to 600ml cold water in trigger spray bottle.



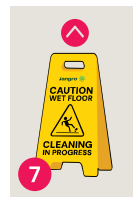
Gently shake to mix.



Clean surface before disinfection.



Spray surface, leave for 1 minute contact time. Wipe with a single use cloth.



Remove Safety Signs.



Causes severe skin burns and eye damage.  
Very toxic to aquatic life with long lasting effects.



Product Usage Guide

Premium