

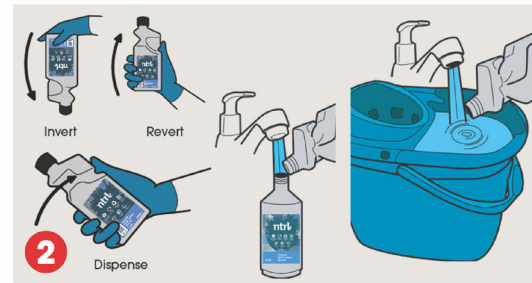
BF068-1 Probiotic Multi-Surface Cleaner



For use on floors, walls & surfaces



Place safety Sign & equip the appropriate PPE as indicated in SDS.



Invert, revert and dispense the correct amount. Dilute 1x4ml to 600ml of cold water (1:150). For mopping, dilute 1x30ml to 5 litres of cold water (1:200).



Spray surfaces and Wipe or mop.



Remove safety signs when dry.

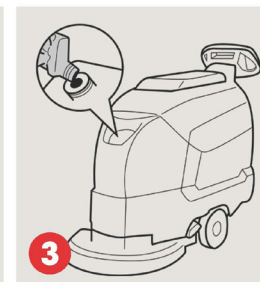
Scrubber dryer



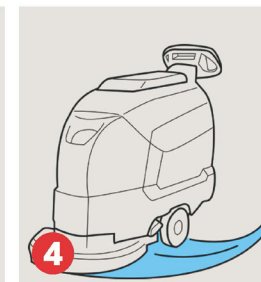
Place safety Sign & equip the appropriate PPE as indicated in SDS.



Invert & revert to trap the correct amount in the dispensing chamber.



Dilute 1x30ml to 10 litres of cold water (1:300).



Clean floor & leave to dry.



Remove safety signs when dry.

Areas of Use



WARNING



Scan me for further product details including COSHH Safety Data Sheet



Cleaning equipment must be cleaned with products from the ntrl range, do not mix with other cleaning chemicals.



Product Usage Guide